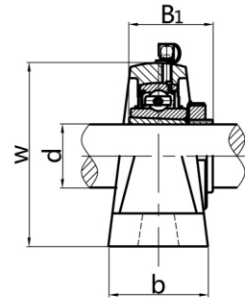
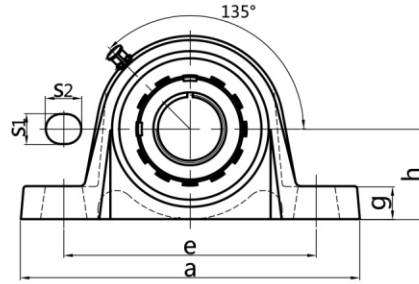


FJ-UKPE2



Unit NO.	Dimensions (mm / in.)										Bolt Size mm/in.	Bearing No.	Housing No.	Weight (kg)
	d	h	a	e	b	s1	s2	g	w	B1				
FJ-UKPE205;H2305	20	36.5	140	105	38	13	19	15	71	35	M10	FJ-UK205;H2305	FJ-PE205	0.86
205;HE2305	3/4	1-7/16	5-1/2	4-1/8	1-1/2	1/2	3/4	19/32	2-25/32	1.378	3/8	FJ-UK205;HE2305		
FJ-UKPE206;H2306	25	42.9	160	121	44	17	20	17	84	38	M14	FJ-UK206;H2306	FJ-PE206	1.29
206;HE2306	1	1-11/16	6-19/64	4-3/4	1-47/64	43/64	25/32	43/64	3-5/16	1.496	1/2	FJ-UK206;HE2306		
206;HS2306	7/8											FJ-UK206;HS2306		
FJ-UKPE207;H2307	30	47.6	167	127	48	17	20	18	93	43	M14	FJ-UK207;H2307	FJ-PE207	1.62
207;HS2307	1-1/8	1-7/8	6-9/16	5	1-7/8	43/64	25/32	45/64	3-21/32	1.693	1/2	FJ-UK207;HS2307		
FJ-UKPE208;H2308	35	49.2	184	137	54	17	20	18	100	46	M14	FJ-UK208;H2308	FJ-PE208	2.03
208;HE2308	1-1/4	1-15/16	7-1/4	5-13/32	2-1/8	43/64	25/32	45/64	3-15/16	1.811	1/2	FJ-UK208;HE2308		
208;HS2308	1-3/8											FJ-UK208;HS2308		
FJ-UKPE209;H2309	40	54.0	190	146	54	17	20	20	106	50	M14	FJ-UK209;H2309	FJ-PE209	2.33
209;HA2309	1-7/16	2-1/8	7-15/32	5-3/4	2-1/8	43/64	25/32	25/32	4-11/64	1.969	1/2	FJ-UK209;HA2309		
209;HE2309	1-1/2											FJ209;HE2309		
209;HS2309	1-5/8											FJ-UK209;HS2309		
FJ-UKPE210;H2310	45	57.2	206	159	60	20	23	21	113	55	M16	FJ-UK210;H2310	FJ-PE210	2.93
210;HA2310	1-11/16	2-1/4	8-1/8	6-1/4	2-3/8	25/32	29/32	53/64	4-29/64	2.165	5/8	FJ-UK210;HA2310		
210;HE2310	1-3/4											FJ-UK210;HE2310		
210;HS2310	1-5/8											FJ-UK210;HS2310		
FJ-UKPE211;H2311	50	63.5	219	171	60	20	23	23	125	59	M16	FJ-UK211;H2311	FJ-PE211	3.53
211;HA2311	1-15/16	2-1/2	8-5/8	6-47/64	2-3/8	25/32	29/32	29/32	4-59/64	2.323	5/8	FJ-UK211;HA2311		
211;HE2311	2											FJ-UK211;HE2311		
211;HS2311	1-7/8											FJ-UK211;HS2311		
FJ-UKPE212;H2312	55	69.8	241	184	70	20	23	25	138	62	M16	FJ-UK212;H2312	FJ-PE212	4.76
212;HS2312	2-1/8	2-3/4	9-1/2	7-1/4	2-3/4	25/32	29/32	63/64	5-7/16	2.441	5/8	FJ-UK212;HS2312		
FJ-UKPE213;H2313	60	76.2	265	203	70	25	28	27	150	65	M20	FJ-UK213;H2313	FJ-PE213	5.69
213;HA2313	2-3/16	3	10-7/16	8	2-3/4	63/64	1-3/32	1-1/16	5-29/32	2.559	3/4	FJ-UK213;HA2313		
213;HE2313	2-1/4											FJ-UK213;HE2313		
213;HS2313	2-3/8											FJ-UK213;HS2313		
FJ-UKPE215;H2315	65	82.6	275	217	74	25	28	28	162	73	M20	FJ-UK215;H2315	FJ-PE215	7.21
215;HA2315	2-7/16	3-1/4	10-53/64	8-35/64	2-29/32	63/64	1-3/32	1-3/32	6-3/8	2.874	3/4	FJ-UK215;HA2315		
215;HE2315	2-1/2											FJ-UK215;HE2315		